

HIKARISOFT LLP

Professional ISDB-T USB 2.0 Receiver

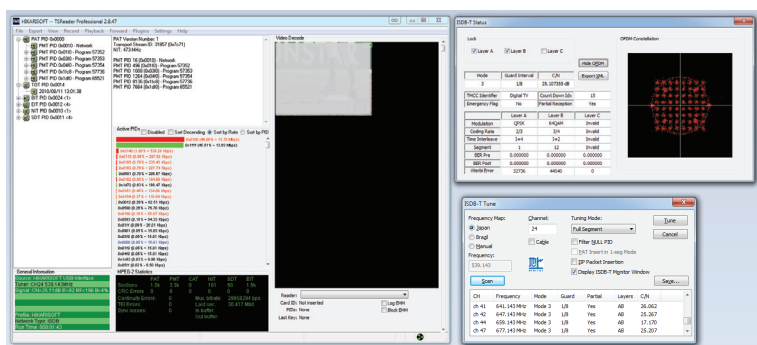
Overview

Portable, bus-powered ISDB-T receiver for analyzing and recording ISDB-T signal in the field and in the lab. Receive, analyze and record ISDB-T Transport Streams, including broadcast null packets. View detailed layer information, SNR, BER, and OFDM Constellation. Export layer configuration to DekTec "StreamXpress"-compatible XML file for re-modulation in the lab. Record full mux, single program, specific PID(s) only. High-sensitivity shielded metal can tuner. Extended frequency range for Brazil. High-speed channel scan allows quickly checking SNR and transmission parameters across entire band. Transport Stream analyzer software package "TSReader" available in Standard or Professional versions (Windows only) Linux v4l-compatible driver available.



Technical Specifications

| | |
|--------------------------|---|
| Input Frequency Range | 174 ~ 219MHz (VHF High) 470 ~ 806MHz (UHF) |
| Input RF Connector | 75 ohm F-Connector |
| Input RF Level | -80dB(mW) ~ -12dB(mW) (13-seg) -97dB(mW) ~ -12dB(mW) (1-seg) |
| Layers | A, AB, ABC |
| ISDB-T Mode | 1, 2, 3 |
| Guard Interval | 1/4, 1/8, 1/16, 1/32 |
| Modulation Mode | DQPSK, QPSK, 16-QAM, 64-QAM |
| Coding Rate | 1/2, 2/3, 3/4, 5/6, 7/8 |
| Segments | 1, 3, 13, Partial Reception |
| Time Interleave | 0, 1, 2, 4, 8, 16, 32 |
| Transport Stream Bitrate | 32Mbps max |
| Size (WxHxD) | 57mm x 18mm x 80mm |
| Weight | 100 grams |
| Operating Environment | Windows 32/64bit, Linux 2.6 |



HIKARISOFT LLP
Furukawa 2-19 ST Building 103
Amakusa, Kumamoto
861-7203 JAPAN
Phone: +81 (0)50-5548-3021

ISDB-TB1 (Brazil, ISDB-T/SBTVD)

HIKARISOFT LLP

Professional ISDB-T USB Receiver with ASI

ISDB-TASI (Japan, Brazil ISDB-T, DVB-ASI)

Overview

Portable, bus-powered ISDB-T receiver for analyzing and recording ISDB-T signal in the field and in the lab. Receive, analyze and record ISDB-T Transport Streams, including broadcast null packets. DVB-ASI compatible output for directly connecting to transmitter, modulator, or hardware Transport Stream analyzer. View detailed layer information, SNR, BER, and OFDM Constellation. Export layer configuration to DekTec "StreamXpress"-compatible XML file for re-modulation in the lab. Record full mux, single program, specific PID(s) only. High-sensitivity shielded metal can tuner. High-speed channel scan allows quickly checking SNR and transmission parameters across entire band. Transport Stream analyzer software package "TSReader" available in Standard or Professional versions (Windows only) Linux v4l-compatible driver available.



Technical Specifications

Input Frequency Range

174 ~ 219MHz (VHF High)

470 ~ 806MHz (UHF)

Input RF Connector

75 ohm F-Connector

Input RF Level

-80dB(mW) ~ -12dB(mW) (13-seg)

-97dB(mW) ~ -12dB(mW) (1-seg)

DVB-ASI Output

75 ohm BNC, 204 byte TS

Layers, Mode

A, AB, ABC, Mode 1, 2, 3

Guard Interval

1/4, 1/8, 1/16, 1/32

Modulation Mode

DQPSK, QPSK, 16-QAM, 64-QAM

Coding Rate

1/2, 2/3, 3/4, 5/6, 7/8

Segments

1, 3, 13, Partial Reception

Time Interleave

0, 1, 2, 4, 8, 16, 32

Transport Stream Bitrate

32Mbps max

Size (WxHxD)

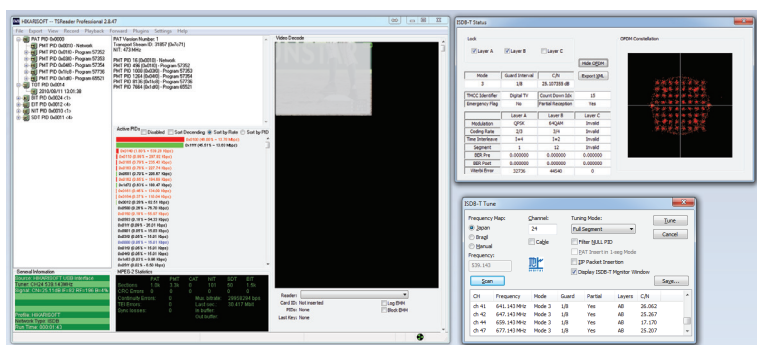
57mm x 18mm x 80mm

Weight

100 grams

Operating Environment

Windows 32/64bit, Linux 2.6



HIKARISOFT LLP

Furukawa 2-19 ST Building 103

Amakusa, Kumamoto

861-7203 JAPAN

Phone: +81 (0)50-5548-3021

HIKARISOFT LLP

Professional ISDB-T USB Receiver with CAS

Overview

Portable, bus-powered ISDB-T receiver for analyzing and recording ISDB-T signal in the field and in the lab. Receive, analyze and record ISDB-T Transport Streams, including broadcast null packets. Built-in B-CAS interface allows realtime decryption of full mux or individual program. View detailed layer information, SNR, BER, and OFDM Constellation. Export layer configuration to DekTec "StreamXpress"-compatible XML file for re-modulation in the lab. Record full mux, single program, specific PID(s) only. High-sensitivity shielded metal can tuner. High-speed channel scan allows quickly checking SNR and transmission parameters across entire band. Transport Stream analyzer software package "TSReader" available in Standard or Professional versions (Windows only) Linux v4l-compatible driver available.



Technical Specifications

Input Frequency Range

470 ~ 806MHz (UHF)

Input RF Connector

75 ohm F-Connector

Input RF Level

-80dB(mW) ~ -12dB(mW) (13-seg)

-97dB(mW) ~ -12dB(mW) (1-seg)

CAS Interface

ARIB-B25 B-CAS

Layers

A, AB, ABC

ISDB-T Mode

1, 2, 3

Guard Interval

1/4, 1/8, 1/16, 1/32

Modulation Mode

DQPSK, QPSK, 16-QAM, 64-QAM

Coding Rate

1/2, 2/3, 3/4, 5/6, 7/8

Segments

1, 3, 13, Partial Reception

Time Interleave

0, 1, 2, 4, 8, 16, 32

Transport Stream Bitrate

32Mbps max

Size (WxHxD)

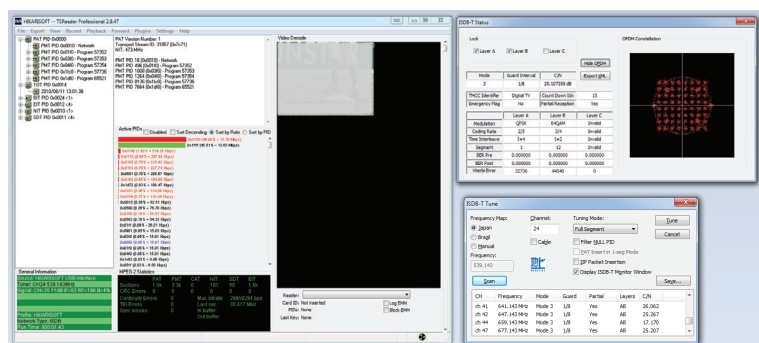
57mm x 18mm x 80mm

Weight

400 grams

Operating Environment

Windows 32/64bit, Linux 2.6



HIKARISOFT LLP

Furukawa 2-19 ST Building 103

Amakusa, Kumamoto

861-7203 JAPAN

Phone: +81 (0)50-5548-3021

ISDB-TADP2 (Japan, ISDB-T, B-CAS)